

Cessna Aircraft Company's first production model of its twin-engine executive 411 aircraft has rolled off the company's assembly line at Wichita, Kan.

The new six-to-eight-place Model 411 is expected to go into an intensive service test program to duplicate customer usage under a variety of conditions. The plane will be flown on a seven-days-a-week basis by pilots with various levels of flying experience, the company announced.

The next 10 411's produced are scheduled to become demonstrators, and they will be utilized in a service and reliability test program throughout the world until the plane is introduced to the general aviation market. During the test program, the demonstrators are expected to stop at various Cessna dealerships for customer previews.

In addition to Cessna's announcement of its first production Model 411, the company also announced improvements in its 1965 single-engine Model 172, *Skyhawk* and 150.

An electric flap system, a flat floor that allows more leg room for pilot and passengers and a control pedestal for the use of the pilot highlight the im-

provements in the Cessna 172 and *Skyhawk*.

Changes on the Model 150 include a new center instrument panel design for more compact radio installation, and form-fitting bucket seats for increased passenger comfort.

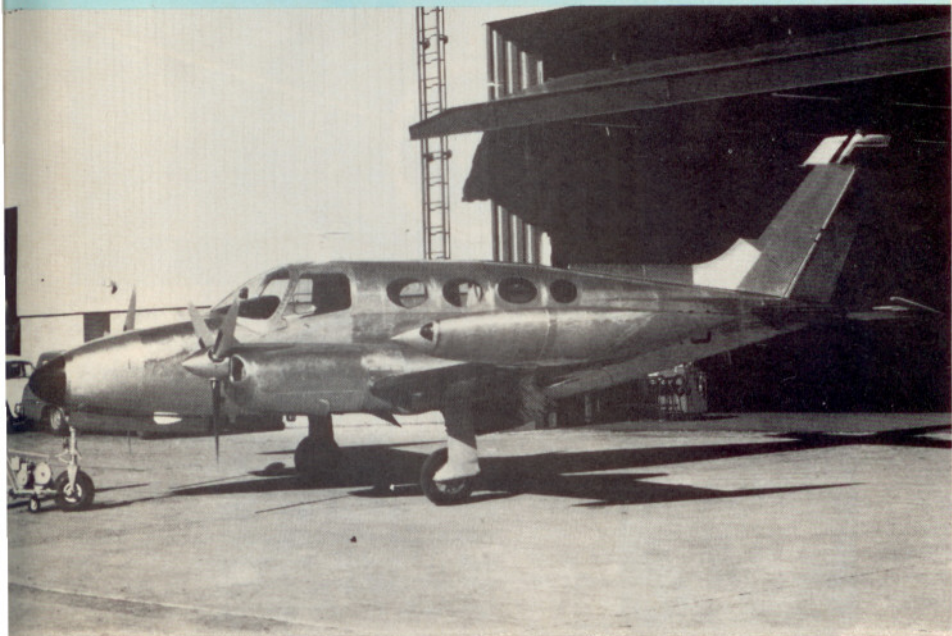
Cessna-Crafted wheels, brakes and tires are offered on all three 1965 models. Also offered on the 172, *Skyhawk* and 150 is an optional Cessna-Crafted rear view mirror that features wide angle and magnified viewing.

The 172 and *Skyhawk* have a cruising speed of 130 and 131 m.p.h. hours, respectively, with 75% power at 7,500 feet. With the same power setting and at the same altitude, the Cessna 172 has a 595-mile range, while the *Skyhawk* has a 600-mile range. Approximate empty weight of the 172 is 1,255 pounds; the *Skyhawk*, 1,320 pounds. The standard model 172 is priced at \$10,500 and the *Skyhawk*, \$12,450.

The Cessna 150 has a cruising speed of 122 m.p.h., and a range of 490 miles at 75% power at 7,500 feet. Three versions of the 150 are offered. The standard version sells for \$7,825; Trainer, \$8,925, and the Inter-City Commuter, \$9,425. ●

Cessna 411 Production Model Tested

Cessna's new turbocharged Model 411, with a 265 m.p.h. speed, is priced at \$108,950. The plane is expected to be introduced to the general aviation market early in 1965



E
S
e
M
A
C
□
□
*